

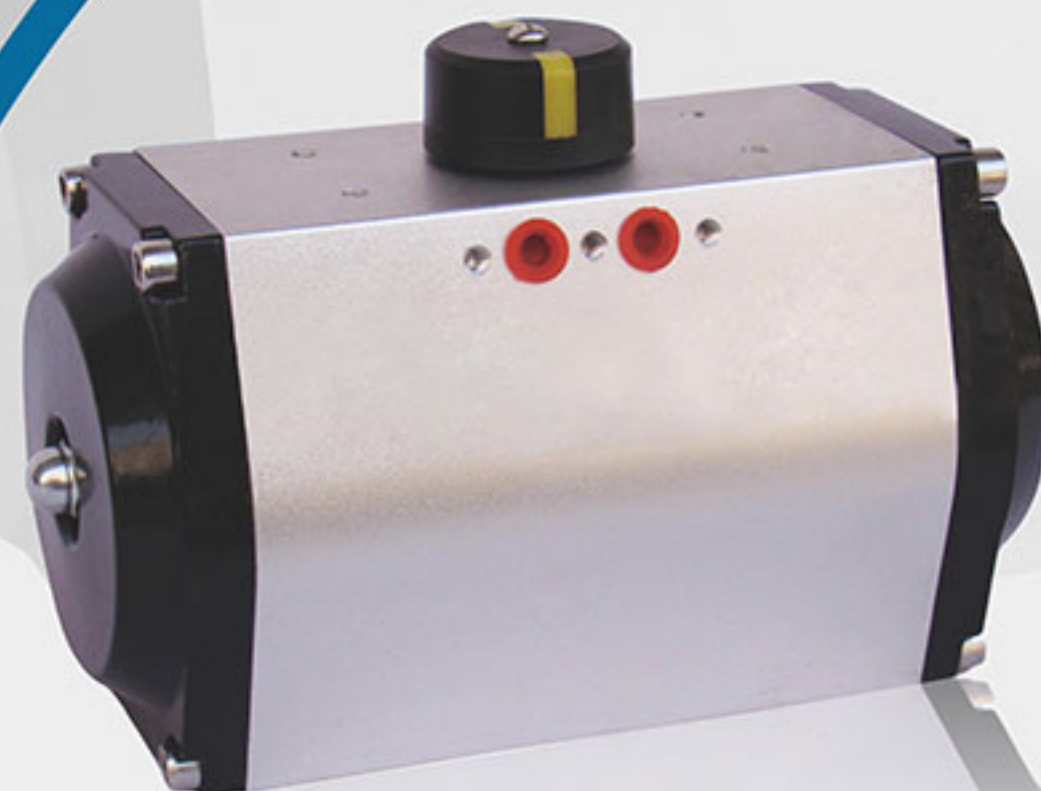
本说明书中的技术参数如有更改,恕不另行通知!
The technical specifications in this instruction are subject to change without notice!



浙江久鼎自控设备有限公司
ZHEJIANG JIUDING AUTOMATIC CONTROL EQUIPMENT CO., LTD.

GT SERIES PNEUMATIC
ACTUATORS

GT 系列气动执行器



浙江久鼎自控设备有限公司
ZHEJIANG JIUDING AUTOMATIC CONTROL EQUIPMENT CO., LTD.

联系地址: 浙江省温州市永嘉县瓯北街道和一村
联系电话: 0577-67327800 67327277 67327801
传真号码: 0577-67327802
企业网址: www.jdacv.com
电子邮箱: jdzksb@163.com

Contact address: Heyi Village, Oubei Sub-District,
Yongjia County, Wenzhou, Zhejiang
Contact number: 0577-67327800 67327277 67327801
Fax number: 0577-67327802
http: //www.jdacv.com
E-mail: jdzksb@163.com

关于久鼎

浙江久鼎自控设备有限公司专业生产制造气动执行器、电动执行器、液动执行器、电动阀、气动阀门（气动蝶阀、气动球阀）、液动阀、调节阀、以及各类工业阀门等各种规格各种系列的自控阀门。

浙江久鼎自控设备有限公司位于“中国泵阀之乡”——浙江省温州市永嘉县瓯北街道一村(温州华鑫贸易有限公司内)，公司将时刻保持以崭新的面貌、全新的理念，不断改革与创新，设计制造出更新更多更好的产品回馈广大用户。面对新的市场竞争态势和全球经济一体化的格局，久鼎自控将秉承“素质决定实力”的发展理念，坚持“诚信为本，信守一言九鼎的承诺，勇于创新，锐意进取，稳健发展”的经营方针，大力推进技术创新，资本运营，国际化拓展三大战略，全面推动久鼎自控由传统企业向高新技术产业转型，尊重知识人才，构筑一种奋发向上，团结拼搏的“久鼎”人文精神，全力打造“实力型企业”争创久鼎自控全新辉煌。

浙江久鼎自控设备有限公司主要生产制造气动阀门、气动蝶阀、气动球阀、以及各类工业阀门等各种规格各种系列的自控阀门。力争在石油、化工、冶金、电力、建筑、热力、给排水、水处理等行业具有较高的知名度及影响力，不断以科技创新，努力开发以国代进，主要按中国GB、JB、美标API、ANSI、英国BS、德标DIN、法国NF、日本JIS、JPI标准生产。并可根据用户特殊要求冶炼和制造。产品广泛用于化工、水处理设备，化肥、冶金、制药、电力、石化引进装置中的阀门配套，产品畅销全国各地，并筹备远销中东、东南亚、欧美等各个发达国家和地区。欢迎来电咨询、订购。

千里之行，始于足下，美誉之声，源于服务。久鼎自控的产品已遍布大江南北，不断演绎与众不同的“久鼎自控”佳作。实施精品战略，创品牌效益，以求实的精神，优质的产品，更完善的售后服务，让所有使用“久鼎”品牌的用户紧密相连，携手共创美好未来。



www.jdacv.com

About JiuDing

Jiuding Automation Equipment Co., Ltd. specializing in the production of pneumatic actuator, electric actuator, hydraulic actuator, electric valve, pneumatic valve manufacturing (gas pneumatic butterfly valve, pneumatic ball valve), hydraulic valve, regulating valve, automatic control valve and all kinds of industrial valves and other various specifications of the various series.

Jiuding Automation Equipment Co., Ltd. is located in "China valve village" - Oubei Town Code No. 62 North Road (next to the building, pump technology) company will keep with a new look, new ideas, continuous reform and innovation, design and produce more and better products to update the users feedback. Facing the new market competition and the pattern of global economic integration, Jiuding automation will be adhering to the "development concept of quality decision power", adhere to the "integrity-based, authoritative, abide by the commitment, innovation, forge ahead, steady development" policy, vigorously promote technological innovation, capital operation, internationalization development strategy three promote the transformation from the traditional enterprise Jiuding automation to high-tech industry, respect knowledge talent, build an uplifting, unity and hard work of the "Jiuding" humanistic spirit, to create "strength of enterprises" striving for the new brilliant Jiuding automatic control.

Jiuding Automatic Control Equipment Co., Ltd. mainly produces pneumatic valves, pneumatic butterfly valves, pneumatic ball valves, and various industrial valves and other specifications of a variety of series of automatic control valves. Strive in the petroleum and chemical industry, metallurgy, electric power, building, heating, water supply and drainage, water treatment and other industries with high visibility and influence, continuous innovation in science and technology, and strive to develop the country generation, mainly by Chinese GB, JB, API, ANSI American Standard, British BS, German standard DIN, France, NF Japan JIS, JPI standard production. And, according to the special requirements of users smelting and manufacturing. The products are widely used in chemical industry, water treatment equipment, fertilizer, metallurgy, power, pharmaceutical, petrochemical introduction of the valve device ancillary products sold throughout the country and exported to the Middle East, Southeast Asia, Europe and the United States for all developed countries and regions. Welcome to inquire, order.

 久鼎自控
JIUDING AUTOMATIC CONTROL

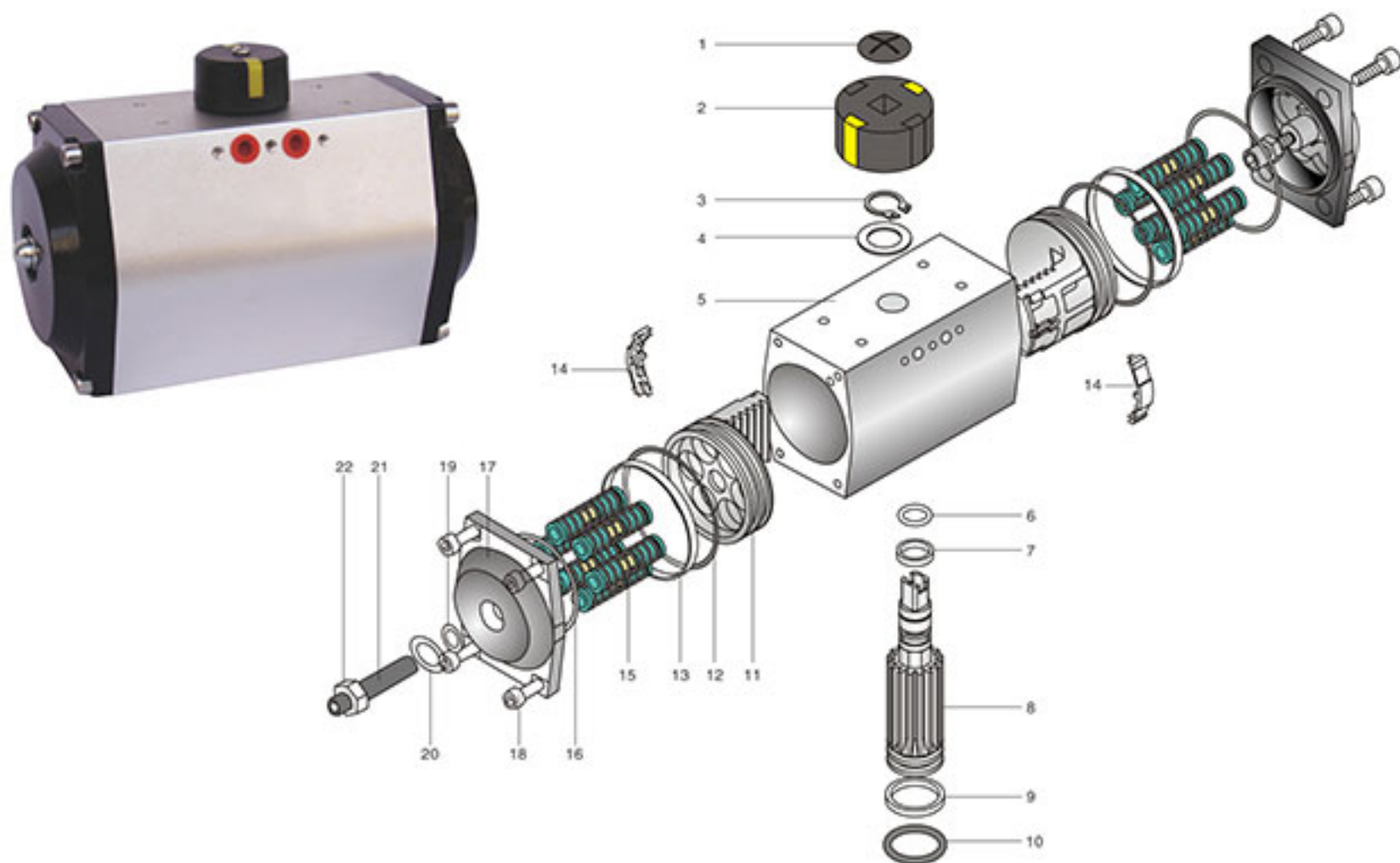


The longest journey begins with the first step, the reputation of sound source in service. Jiu Ding automatic control products have been all over the north and south, continue to deduce a unique "Jiu Ding Automatic Control" masterpiece. The implementation of boutique strategy, create brand benefits, with the spirit of truth-seeking, quality products, more perfect after-sales service, so that all users using "JIU DING" brand closely linked to join hands in creating a better future.

千里之行，始于足下，
美誉之声，源于服务。

The Longest Journey Begins
With The First Step,
The Reputation Of Sound
Source In Service

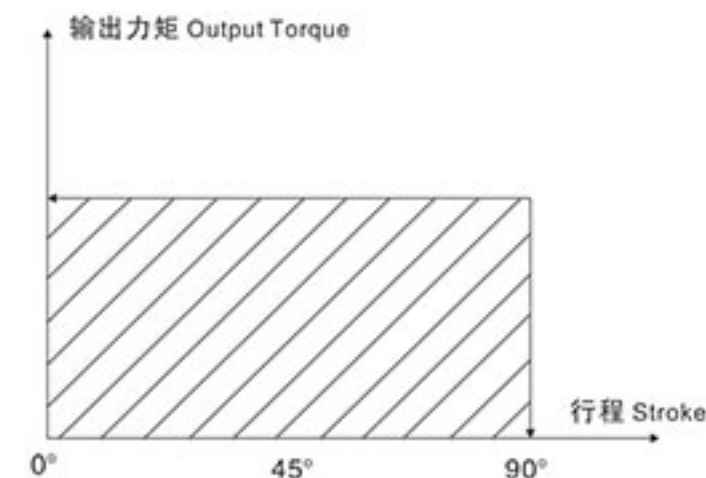
GT气动执行器总装图 GT General Assembly Diagram of Pneumatic Actuator



GT气动执行器主要零件 GT Pneumatic Actuator Parts And Materials

| 序号 Serial number | 名称 Name | 数量 Number | 材料 Material Science | 防腐处理 Antiseptic treatment | 可选材料 Optional materials |
|---------------------|-------------------------------------|--------------|----------------------------------|------------------------------|--------------------------------------|
| 1 | 指示器螺钉 Indicator screw | 1 | 塑料 Plastic | | |
| 2 | 指示器 Indicator | 1 | 塑料 Plastic | | |
| 3 | 轴挡 Axle gear | 1 | 不锈钢 Stainless steel | | |
| 4 | 外垫片 Outer gasket | 1 | 工程塑料 Engineering plastic | | |
| 5 | 缸体 Cylinder block | 1 | 铝合金 Aluminium alloy | 硬质氧化 Hard oxidation | |
| 6 | 上轴“O”型圈 Upper shaft “O” type ring | 1 | 丁腈橡胶 NBR | | 氟硅橡胶 Fluorosilicone /silicone rubber |
| 7 | 上轴支承圈 Upper shaft support ring | 1 | 工程塑料 Engineering plastic | | |
| 8 | 轴 Axis | 1 | 合金钢 Alloy steel | 镀镍 Plate with nickel | 不锈钢 Stainless steel |
| 9 | 下轴支承圈 Lower shaft support ring | 1 | 工程塑料 Engineering plastic | | |
| 10 | 下轴“O”型圈 Lower shaft “O” ring | 1 | 丁腈橡胶 NBR | | 氟硅橡胶 Fluorosilicone /silicone rubber |
| 11 | 活塞 Piston | 2 | 压铸铝合金 Die-casting aluminum alloy | 硬质氧化 Hard oxidation | |
| 12 | 活塞“O”型圈 Piston “O” ring | 2 | 丁腈橡胶 NBR | | 氟硅橡胶 Fluorosilicone /silicone rubber |
| 13 | 活塞支承圈 Piston support ring | 2 | 工程塑料 Engineering plastic | | |
| 14 | 活塞导板 Piston guide plate | 2 | 工程塑料 Engineering plastic | | |
| 15 | 弹簧 Spring | 0-12 | 弹簧钢 Spring steel | 浸漆 Dipping paint | |
| 16 | 端盖“O”型圈 End cover “O” ring | 2 | 丁腈橡胶 NBR | | 氟硅橡胶 Fluorosilicone /silicone rubber |
| 17 | 端盖 End cap | 2 | 压铸铝合金 Die-casting aluminum alloy | 粉末喷涂 Powder spraying | |
| 18 | 端盖紧固螺栓 Fastening bolt for end cover | 8 | 不锈钢 Stainless steel | | |
| 19 | 调节螺杆“O”型圈 Adjusting screw “O” ring | 2 | 丁腈橡胶 NBR | | 氟硅橡胶 Fluorosilicone /silicone rubber |
| 20 | 平垫 Flat pad | 2 | 不锈钢 Stainless steel | | |
| 21 | 螺母 Nut | 2 | 不锈钢 Stainless steel | | |
| 22 | 调节螺杆 Adjusting screw | 2 | 不锈钢 Stainless steel | | |

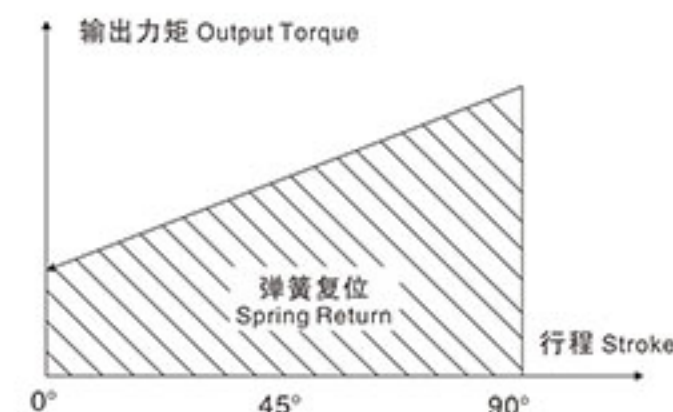
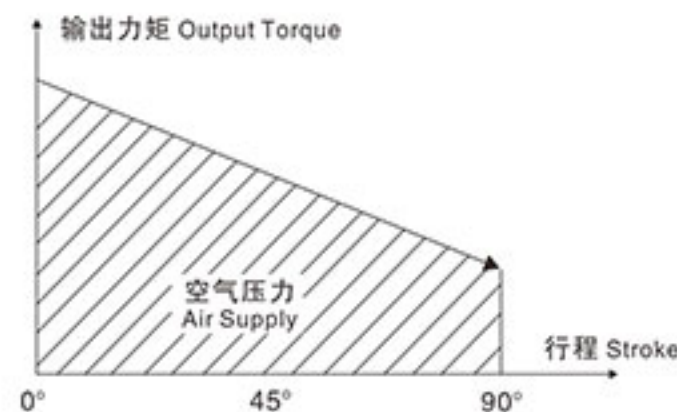
GT 气动执行器双作用力矩图 GT Pneumatic Actuator Double Acting Output Torque



GT 气动执行器双作用力矩表 GT Pneumatic Actuator Double Acting Output Torque

| 型号 Model | 气源压力 Air supply (Bar) | | | | | | | | | |
|----------|-------------------------|------|-------|-------|-------|-------|-------|-------|-------|-------|
| | 2 | 2.5 | 3 | 4 | 4.5 | 5 | 5.5 | 6 | 7 | 8 |
| GT52 | 8.1 | 10.1 | 12.1 | 16.1 | 18.1 | 20.2 | 22.2 | 24.2 | 28.2 | 32.3 |
| GT63 | 14.2 | 17.8 | 21.3 | 28.4 | 32.0 | 35.5 | 39.4 | 42.6 | 49.7 | 56.8 |
| GT83 | 30.8 | 38.5 | 46.2 | 61.6 | 69.4 | 77.1 | 84.8 | 92.5 | 107.9 | 123.3 |
| GT110 | 72.2 | 90.2 | 108.3 | 144.4 | 162.4 | 180.5 | 198.5 | 216.5 | 252.6 | 288.7 |
| GT127 | 115 | 144 | 173 | 231 | 260 | 289 | 318 | 346 | 404 | 462 |
| GT160 | 229 | 286 | 344 | 458 | 515 | 573 | 630 | 687 | 802 | 916 |
| GT190 | 388 | 485 | 582 | 775 | 872 | 969 | 1066 | 1163 | 1357 | 1551 |
| GT210 | 526 | 658 | 789 | 1052 | 1184 | 1316 | 1447 | 1579 | 1842 | 2105 |
| GT240 | 773 | 966 | 1160 | 1546 | 1740 | 1933 | 2126 | 2320 | 2706 | 3093 |
| GT270 | 1174 | 1468 | 1761 | 2349 | 2642 | 2936 | 3229 | 3523 | 4110 | 4697 |
| GT300 | 1526 | 1908 | 2289 | 3052 | 3434 | 3815 | 4197 | 4578 | 5343 | 6104 |
| GT350 | 2285 | 2856 | 3427 | 4570 | 5141 | 5712 | 6283 | 6854 | 7997 | 9139 |

GT 气动执行器单作用力矩图 GT Pneumatic Actuator Single Acting Output Torque



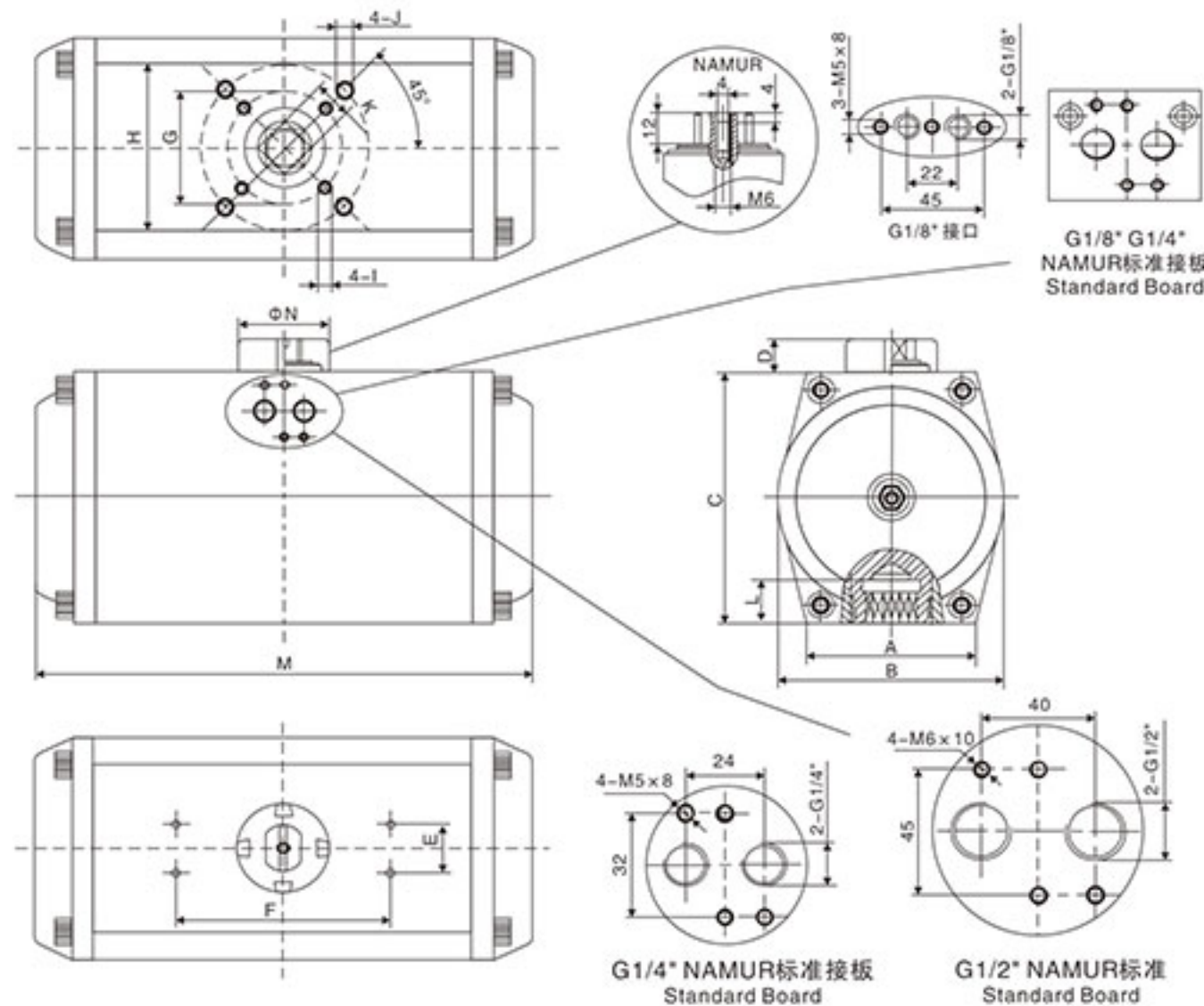
GT 气动执行器单作用力矩表 GT Pneumatic Actuator Single Acting Output Torque

| 气源压力 Air supply | | 气源克服弹簧输出力矩 (N.m) Output torque of air supply against spring | | | | | | | | | | | | 弹簧输出力矩(Nm) Single output torque | | |
|-----------------|-----------------------|---|--------|----------|--------|----------|--------|----------|--------|----------|--------|----------|--------|------------------------------------|--------|------|
| | | 3Bar | | 4Bar | | 5Bar | | 6Bar | | 7Bar | | 8Bar | | | | |
| | | 0° | 90° | 0° | 90° | 0° | 90° | 0° | 90° | 0° | 90° | 0° | 90° | | | |
| 型号 Model | 弹簧数量 Spring number | 开始 Start | 结束 End | 开始 Start | 结束 End | 开始 Start | 结束 End | 开始 Start | 结束 End | 开始 Start | 结束 End | 开始 Start | 结束 End | 开始 Start | 结束 End | |
| GTE 52 | 5 | 7.6 | 5.7 | | | | | | | | | | | 6.2 | 4.3 | |
| | 6 | 6.9 | 4.5 | 10.9 | 8.5 | | | | | | | | | 7.4 | 5.0 | |
| | 7 | 6.0 | 3.3 | 9.8 | 7.3 | 14.0 | 10.4 | | | | | | | 8.6 | 5.9 | |
| | 8 | 5.2 | 2.0 | 9.2 | 6.0 | 13.2 | 9.1 | 17.2 | 14.1 | | | | | 9.9 | 6.7 | |
| | 9 | 4.3 | 0.8 | 8.3 | 4.8 | 12.3 | 7.9 | 16.3 | 12.8 | 20.3 | 16.8 | | | 11.1 | 7.6 | |
| | 10 | | | 7.4 | 3.6 | 11.5 | 6.7 | 15.5 | 11.6 | 19.5 | 15.6 | | | 12.4 | 8.5 | |
| | 11 | | | 6.6 | 2.3 | 10.6 | 5.4 | 14.6 | 10.4 | 18.6 | 14.3 | 22.6 | 18.3 | 13.6 | 9.3 | |
| | 12 | | | | | 9.7 | 4.2 | 13.8 | 9.1 | 17.8 | 12.2 | 21.8 | 17.1 | 14.8 | 10.2 | |
| | GTE 63 | 5 | 15.0 | 11.4 | 22.3 | 14.9 | | | | | | | | | 10.4 | 6.8 |
| | | 6 | 13.6 | 9.3 | 20.9 | 16.6 | 28.3 | 23.9 | | | | | | | 12.5 | 8.2 |
| | | 7 | 12.5 | 7.2 | 19.5 | 14.5 | 26.8 | 21.9 | | | | | | | 14.6 | 9.6 |
| | | 8 | 10.9 | 5.1 | 18.2 | 12.4 | 25.5 | 19.8 | 32.8 | 27.8 | 40.1 | 34.3 | | | 16.7 | 10.9 |
| 9 | | | | 16.8 | 10.4 | 24.1 | 17.7 | 31.4 | 24.9 | 38.7 | 32.2 | | | 18.8 | 12.3 | |
| 10 | | | | 15.4 | 8.2 | 22.8 | 15.6 | 30.0 | | 37.3 | 30.1 | 44.7 | 37.4 | 20.9 | 13.7 | |
| 11 | | | | | | 21.5 | 13.5 | 28.7 | 20.7 | 36.0 | 28.0 | 43.3 | 35.3 | 22.9 | 15.0 | |
| 12 | | | | | | 20.0 | 11.4 | 27.3 | 18.6 | 34.6 | 25.9 | 41.9 | 33.3 | 25.0 | 16.4 | |
| GTE 83 | | 5 | 31.1 | 24.0 | 46.8 | 39.7 | | | | | | | | | 23.0 | 15.8 |
| | | 6 | 28.0 | 19.3 | 43.7 | 35.1 | 59.4 | 50.7 | | | | | | | 27.6 | 19.0 |
| | | 7 | 24.8 | 14.8 | 40.5 | 30.5 | 56.2 | 46.2 | | | | | | | 32.2 | 22.1 |
| | | 8 | 21.7 | 10.1 | 37.4 | 25.8 | 53.1 | 41.5 | 68.8 | 57.2 | 84.5 | 72.9 | | | 36.8 | 25.3 |
| | 9 | | | 34.2 | 21.3 | 49.9 | 37.0 | 65.6 | 52.6 | 81.2 | 68.3 | | | 41.4 | 28.5 | |
| | 10 | | | 31.0 | 16.6 | 46.7 | 32.3 | 62.4 | 48.0 | 78.1 | 63.7 | 93.8 | 79.3 | 46.0 | 31.6 | |
| | 11 | | | | | 43.6 | 27.7 | 59.3 | 43.4 | 75.0 | 59.1 | 90.6 | 74.8 | 50.6 | 34.8 | |
| | 12 | | | | | 40.4 | 23.2 | 56.1 | | 71.7 | 54.5 | 87.4 | 70.2 | 55.2 | 38.0 | |
| | GTE 110 | 5 | 71.3 | 53.4 | 107.4 | 89.5 | | | | | | | | | 54.9 | 37.0 |
| | | 6 | 64.0 | 42.3 | 100.1 | 78.4 | 136.2 | 114.5 | | | | | | | 66.0 | 44.3 |
| | | 7 | 56.6 | 31.5 | 92.7 | 67.6 | 128.8 | 103.7 | | | | | | | 76.8 | 51.7 |
| | | 8 | 49.2 | 20.4 | 85.3 | 56.5 | 121.4 | 92.6 | 157.4 | 128.6 | 193.5 | 164.7 | | | 87.9 | 59.1 |
| 9 | | | | 77.9 | 45.3 | 114.0 | 81.4 | 150.0 | 117.4 | 186.1 | 153.5 | | | 99.1 | 66.5 | |
| 10 | | | | 70.5 | 34.4 | 106.6 | 70.5 | 142.6 | 106.5 | 178.7 | 142.6 | 214.8 | 178.7 | 110.0 | 73.9 | |
| 11 | | | | | | 99.2 | 59.4 | 135.2 | 95.4 | 171.3 | 131.1 | 207.4 | 167.6 | 121.1 | 81.3 | |
| 12 | | | | | | 91.8 | 48.4 | 127.8 | 84.4 | 163.9 | 120.5 | 200.0 | 156.6 | 132.1 | 88.7 | |
| GTE 127 | | 5 | 114 | 86 | 172 | 146 | | | | | | | | | 87 | 59 |
| | | 6 | 103 | 68 | 161 | 126 | 219 | 184 | | | | | | | 105 | 70 |
| | | 7 | 91 | 51 | 149 | 109 | 207 | 167 | | | | | | | 122 | 82 |
| | | 8 | 79 | 33 | 137 | 91 | 195 | 149 | 252 | 206 | 310 | 264 | | | 140 | 94 |
| | 9 | | | 126 | 73 | 186 | 131 | 241 | 188 | 299 | 246 | | | 158 | 105 | |
| | 10 | | | | 56 | 172 | 114 | 229 | 171 | 287 | 229 | 345 | 287 | 175 | 117 | |
| | 11 | | | | | 160 | 96 | 217 | 153 | 275 | 211 | 333 | 269 | 193 | 129 | |
| | 12 | | | | | 149 | 79 | 206 | 136 | 264 | 194 | 322 | 252 | 210 | 140 | |
| | GTE 160 | 5 | 259 | 191 | 392 | 324 | | | | | | | | | 208 | 140 |
| | | 6 | 232 | 149 | 365 | 282 | 498 | 415 | | | | | | | 250 | 168 |
| | | 7 | 203 | 107 | 336 | 240 | 469 | 373 | | | | | | | 292 | 196 |
| | | 8 | 176 | 66 | 309 | 199 | 442 | 237 | 575 | 465 | 708 | 598 | | | 333 | 223 |
| 9 | | | | 280 | 157 | 413 | 290 | 546 | 423 | 679 | 556 | | | 375 | 251 | |
| 10 | | | | 253 | 115 | 386 | 248 | 519 | 381 | 652 | 514 | 785 | 647 | 417 | 279 | |
| 11 | | | | | | 358 | 207 | 491 | 340 | 624 | 473 | 757 | 606 | 458 | 307 | |
| 12 | | | | | | 330 | 165 | 463 | 298 | 596 | 431 | 729 | 564 | 500 | 335 | |

GT 气动执行器单作用力矩表 GT Pneumatic Actuator Single Acting Output Torque

| 气源压力 Air supply | | 气源克服弹簧输出力矩 (N.m) Output torque of air supply against spring | | | | | | | | | | | | 弹簧输出力矩(Nm) Single output torque | | |
|-----------------|-----------------------|---|--------|----------|--------|----------|--------|----------|--------|----------|--------|----------|--------|------------------------------------|--------|------|
| | | 3Bar | | 4Bar | | 5Bar | | 6Bar | | 7Bar | | 8Bar | | | | |
| | | 0° | 90° | 0° | 90° | 0° | 90° | 0° | 90° | 0° | 90° | 0° | 90° | | | |
| 型号 Model | 弹簧数量 Spring number | 开始 Start | 结束 End | 开始 Start | 结束 End | 开始 Start | 结束 End | 开始 Start | 结束 End | 开始 Start | 结束 End | 开始 Start | 结束 End | 开始 Start | 结束 End | |
| GTE 190 | 5 | 438 | 329 | 651 | 542 | | | | | | | | | 309 | 200 | |
| | 6 | 398 | 267 | 611 | 480 | 824 | 693 | | | | | | | 371 | 240 | |
| | 7 | 358 | 205 | 571 | 418 | 784 | 631 | | | | | | | 433 | 280 | |
| | 8 | 318 | 143 | 531 | 356 | 744 | 569 | 957 | 782 | 1169 | 995 | | | 495 | 320 | |
| | 9 | | | 491 | 295 | 704 | 507 | 917 | 720 | 1130 | 933 | | | 557 | 360 | |
| | 10 | | | 451 | 233 | 664 | 446 | 877 | 658 | 1090 | 871 | 1302 | 1084 | 618 | 400 | |
| | 11 | | | | | 624 | 446 | 837 | 597 | 1050 | 809 | 1263 | 1022 | 680 | 440 | |
| | 12 | | | | | 584 | 322 | 797 | 535 | 1010 | 748 | 1223 | 960 | 742 | 480 | |
| | GTE 210 | 5 | 523 | 418 | 789 | 684 | | | | | | | | | 380 | 275 |
| | | 6 | 468 | 342 | 734 | 608 | 1000 | 874 | | | | | | | 456 | 330 |
| | | 7 | 413 | 266 | 679 | 532 | 945 | 798 | | | | | | | 532 | 385 |
| | | 8 | 358 | 190 | 624 | 456 | 890 | 722 | 1156 | 988 | 1422 | 1254 | | | 608 | 440 |
| 9 | | | | 569 | 380 | 835 | 646 | 1101 | 912 | 1367 | 1178 | | | 684 | 495 | |
| 10 | | | | 514 | 304 | 780 | 570 | 1046 | 836 | 1312 | 1102 | 1578 | 1368 | 760 | 550 | |
| 11 | | | | | | 725 | 494 | 991 | 760 | 1257 | 1026 | 1526 | 1292 | 836 | 605 | |
| 12 | | | | | | 670 | 418 | 936 | 684 | 1202 | 950 | 1468 | 1216 | 912 | 660 | |
| GTE 240 | | 5 | 744 | 600 | 1129 | 985 | | | | | | | | | 554 | 410 |
| | | 6 | 662 | 489 | 1047 | 847 | 1432 | 1259 | | | | | | | 665 | 492 |
| | | 7 | 580 | 379 | 964 | 764 | 1349 | 1149 | | | | | | | 775 | 575 |
| | | 8 | 498 | 268 | 883 | 653 | 1267 | 1037 | 1652 | 1422 | 2037 | 1807 | | | 886 | 656 |
| | 9 | | | 800 | 542 | 1185 | 926 | 1569 | 1311 | 1954 | 1696 | | | 998 | 739 | |
| | 10 | | | 718 | 431 | 1103 | 816 | 1488 | 1201 | 1872 | 1586 | 2257 | 1970 | 1108 | 821 | |
| | 11 | | | | | 1021 | 705 | 1406 | 1090 | 1791 | 1474 | 2176 | 1859 | 1219 | 903 | |
| | 12 | | | | | 939 | 594 | 1323 | 979 | 1708 | 1363 | 2093 | 1748 | 1330 | 985 | |
| | GTE 270 | 5 | 1195 | 968 | 1779 | 1552 | | | | | | | | | 787 | 560 |
| | | 6 | 1083 | 811 | 1667 | 1396 | 2252 | 1981 | | | | | | | 943 | 672 |
| | | 7 | 972 | 654 | 1556 | 1238 | 2141 | 1826 | | | | | | | 1101 | 786 |
| | | 8 | 860 | 497 | 1444 | 1081 | 2029 | 1666 | 2614 | 2252 | 3199 | 2836 | | | 1258 | 895 |
| 9 | | | | 1332 | 923 | 1917 | 1509 | 2502 | 2094 | 3087 | 2678 | | | 1416 | 1007 | |
| 10 | | | | 1220 | 767 | 1805 | 1352 | 2390 | 1937 | 2974 | 2521 | 3560 | 3107 | 1572 | 1119 | |
| 11 | | | | | | 1693 | 1194 | 2278 | 1779 | 2862 | 2364 | 3448 | 2949 | 1730 | 1231 | |
| 12 | | | | | | 1582 | 1037 | 2167 | 1623 | 2751 | 2207 | 3336 | 2792 | 1887 | 1342 | |
| GTE 300 | | 5 | 1522 | 1139 | 2285 | 1902 | | | | | | | | | 1150 | 767 |
| | | 6 | 1370 | 911 | 2133 | 1674 | | | | | | | | | 1378 | 919 |
| | | 7 | 1218 | 683 | 1981 | 1446 | 2744 | 2209 | | | | | | | 1606 | 1071 |
| | | 8 | 1066 | 455 | 1829 | 1218 | 2592 | 1981 | | | | | | | 1834 | 1223 |
| | 9 | | | 1677 | 990 | 2440 | 1753 | 3203 | 2516 | | | | | 2062 | 1375 | |
| | 10 | | | 1525 | 762 | 2288 | 1525 | 3051 | 2288 | 3814 | 3051 | 4577 | 3814 | 2290 | 1527 | |
| | 11 | | | | | 2136 | 1297 | 2899 | 2060 | 3662 | 2823 | 4425 | 3586 | 2518 | 1679 | |
| | 12 | | | | | 1984 | 1069 | 2747 | 1832 | 3510 | 2595 | 4273 | 3358 | 2746 | 1831 | |
| | GTE 350 | 5 | 2003 | 1474 | 3285 | 2578 | | | | | | | | | 1702 | 1173 |
| | | 6 | 1863 | 1157 | 3006 | 2300 | | | | | | | | | 2043 | 1406 |
| | | 7 | 1602 | 779 | 2745 | 1922 | 3886 | 3065 | | | | | | | 2383 | 1642 |
| | | 8 | 1341 | 401 | 2484 | 1544 | 3626 | 2686 | | | | | | | 2724 | 1877 |
| 9 | | | | 2224 | 1165 | 3366 | 2307 | 4508 | 3449 | | | | | 3064 | 2112 | |
| 10 | | | | 1963 | 787 | 3105 | 1929 | 4247 | 3071 | 5390 | 4214 | 6532 | 5356 | 3405 | 2346 | |
| 11 | | | | | | 2844 | 1551 | 3986 | 2693 | 5129 | 3836 | 6271 | 4978 | 3745 | 2581 | |
| 12 | | | | | | 2584 | 1172 | 3726 | 2314 | 4869 | 3457 | 6011 | 4599 | 4086 | 2816 | |

GT 气动执行器外形 GT Pneumatic Actuator External



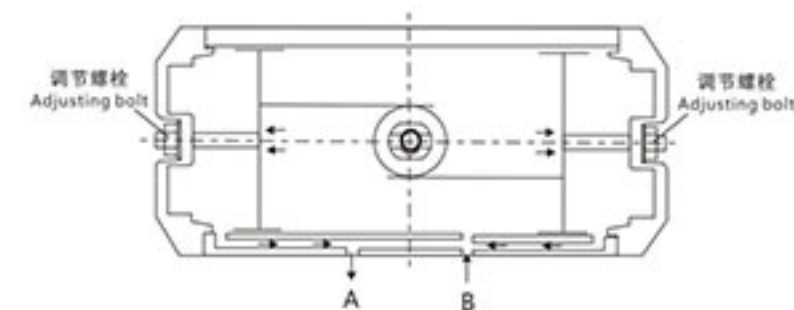
| 型号 Model | A | B | C | D | E | F | G | H | I | J | K | L | M | N | 气源接口 Air connection |
|----------|-----|-----|-------|----|----|-----|------|------|--------|--------|----|-----|-----|-------------|------------------------|
| GT52 | 50 | 59 | 74 | 20 | 30 | 80 | Φ36 | Φ50 | M5×8 | M6×10 | 11 | 14 | 125 | 40 | G1/8" |
| GT63 | 60 | 70 | 88 | 20 | 30 | 80 | Φ36 | Φ50 | M5×8 | M6×10 | 14 | 18 | 140 | 40 | G1/8" |
| GT75 | 65 | 83 | 100 | 20 | 30 | 80 | Φ50 | Φ70 | M6×10 | M8×13 | 14 | 18 | 183 | 40 | G1/8" |
| GT92 | 74 | 103 | 116 | 20 | 30 | 80 | Φ50 | Φ70 | M6×10 | M8×13 | 17 | 21 | 218 | 40 | G1/8" |
| GT110 | 90 | 120 | 140 | 20 | 30 | 80 | Φ70 | Φ102 | M8×13 | M10×16 | 17 | 21 | 230 | 40 | NAMUR G1/4" |
| GT127 | 102 | 141 | 160 | 20 | 30 | 80 | Φ70 | Φ102 | M8×13 | M10×16 | 22 | 26 | 300 | 55 | NAMUR G1/4" |
| GT140 | 106 | 153 | 173.5 | 30 | 30 | 130 | Φ102 | Φ125 | M10×16 | M12×20 | 27 | 31 | 352 | 55 | NAMUR G1/4" |
| GT190 | 125 | 206 | 234 | 30 | 30 | 130 | Φ140 | | M16×25 | 36 | 40 | 500 | 80 | NAMUR G1/4" | |
| GT210 | 135 | 226 | 255 | 30 | 30 | 130 | Φ140 | | M16×25 | 36 | 40 | 530 | 80 | NAMUR G1/4" | |
| GT240 | 155 | 256 | 290 | 30 | 30 | 130 | Φ165 | | M20×25 | 46 | 50 | 602 | 80 | NAMUR G1/4" | |
| GT270 | 190 | 294 | 320 | 30 | 30 | 130 | Φ165 | | M20×25 | 46 | 50 | 722 | 80 | NAMUR G1/2" | |
| GT300 | 196 | 324 | 348 | 30 | 30 | 130 | Φ165 | | M20×25 | 46 | 60 | 820 | 80 | NAMUR G1/2" | |
| GT350 | 220 | 380 | 407 | 30 | 30 | 130 | Φ165 | | M20×25 | 46 | 60 | 900 | 80 | NAMUR G1/2" | |

性能和特点

1. 挤压成型的优质铝合金缸体，经精密加工的内孔和外部表面经细磨及硬质氧化处理，使用寿命长，摩擦系数低。
2. 紧凑的双活塞齿轮、齿条式结构，啮合精确，传动平稳，安装位置对称，输出扭矩恒定，通过简单的改变活塞装配位置可得到反方向。
3. 预压缩负荷弹簧，安装、拆卸安全、方便。
4. 端盖两侧的行程调节螺钉可在0°和90°±5°单向的行程调节。
5. 安装连接尺寸符合ISO5211、DIN3337和VDI/VDE3845以及NAMUR标准。
6. 所有的紧固件均采用不锈钢材料，长期抗腐蚀。
7. 密封件材料有常温型、高温型、低温型。在常温工作条件下使用丁腈橡胶，在高温或低温时采用氟橡胶或硅橡胶。
8. 根据需要可提供多种角行程（例如：120°、135°、180°等）和三式气动执行器。

工作原理 Operating Principle

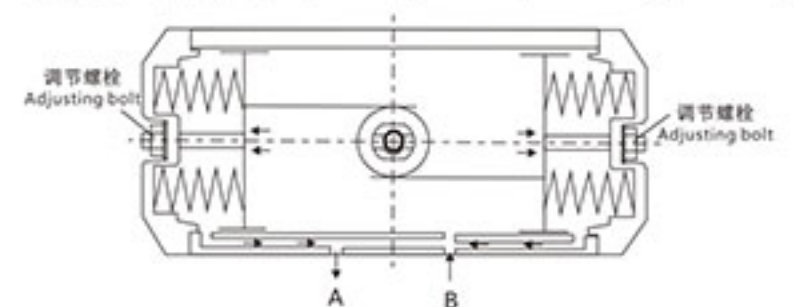
双作用工作原理 Operating Principle Of Double Acting



压缩空气从气口(B)进入气缸两活塞之间，使活塞分离向气缸两端移动，两端空气通过气口(A)排出，同时两活塞齿条同步带动输出轴逆时针旋转90°，轴的指示位置为开位，此时两端调节螺栓可以在开位的位置微量调节角度为±5°，角度调节好后旋紧螺母，保证气缸密封。

Compressed air from the air port (B) into the cylinder between the two pistons, force the pistons outwards, the air in both ends exhaust through the port (A), at the same time two pistons drive the output shaft rotate 90° counterclockwise, the shaft indicator turn to open position. At this time, the adjusting bolts on end caps can adjust ±5° in the open position. After the adjustment, pls tighten the adjustment nuts to guarantee the cylinder seal.

单作用工作原理 Operating Principle Of Single Acting

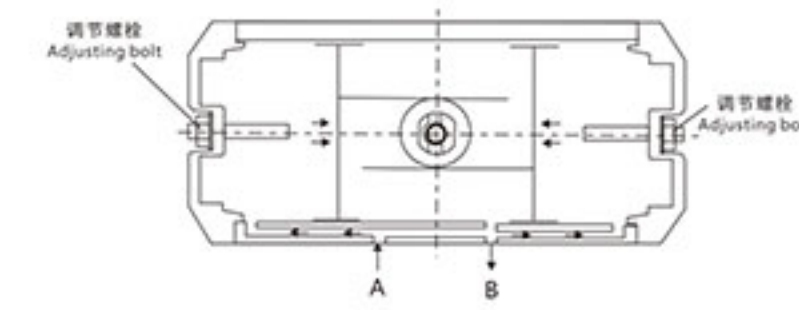


压缩空气从气口(B)进入气缸两活塞之间，使活塞分离向气缸两端移动，迫使两端的弹簧压缩，两端空气通过气口(A)排出，同时两活塞齿条同步带动输出轴逆时针旋转90°，轴的指示位置为开位，此时两端调节螺栓可以在开位的位置微量调节角度为±5°，角度调节好后旋紧螺母，保证气缸密封。

Compressed air from the air port (B) into the cylinder between the two pistons, force the pistons outwards, force the springs on both ends to compress, the air in both ends exhaust through the port (A), at the same time two pistons drive the output shaft rotate 90° counterclockwise, the shaft indicator turn to open position. At this time, the adjusting bolts on end caps can adjust ±5° in the open position. After the adjustment, pls tighten the adjustment nuts to guarantee the cylinder seal.

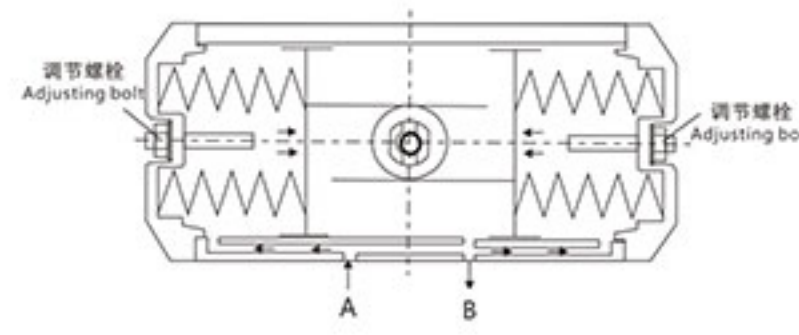
Performance And Feature

1. The extruded high quality aluminum alloy cylinder, with precision machining inner hole and fine grinding and hard anodized treatment surface, has long service life and low friction coefficient.
2. Compact double pistons rack & pinion structure, meshing precision, stable transmission, installation position symmetry, output torque constant, can be reversed by simply changing the piston assembly position.
3. Precompression load spring make installation, remove safe and convenient.
4. The travel adjustment screws on both sides of the cover can be adjusted at 0° and 90° ± 5° one-way travel.
5. The installation connection size conforms to ISO5211, DIN3337 and VDI/VDE3845 and NAMUR standard.
6. All fasteners are made of stainless steel and have long corrosion resistance.
7. The seal material has normal temperature type, high temperature type, low temperature type. NBR for normal temperature, Viton for high temperature and silicon rubber for low temperature.
8. We can provide a variety of special angle travel (For example: 120°, 135°, 180°, etc.) and three type pneumatic actuators according to the requirement.



压缩空气从气口(A)进入气缸两端，使活塞向气缸中间移动，两活塞之间空气通过气口(B)排出，同时两活塞齿条同步带动输出轴顺时针旋转90°，轴的指示位置为关位。

Compressed air from the air port (A) into both ends of the cylinder, force the pistons inwards, the air between two pistons exhaust through the port (B), at the same time two pistons drive the output shaft rotate 90° clockwise, the shaft indicator turn to close position.



压缩空气经过电磁阀换向后，气缸的两活塞在弹簧的弹力下向中间移动，两活塞之间空气通过气口(B)排出，同时两活塞齿条同步带动输出轴顺时针旋转90°，轴的指示位置为开位。

Compressed air reversed by solenoid valve, the pistons inwards forced by spring, the air between two pistons exhaust through the port (B), at the same time two pistons drive the output shaft rotate 90° clockwise, the shaft indicator turn to open position.

工作技术条件 Working Technical Conditions

- | | |
|--|--|
| <p>1、使用介质: 压缩空气、无腐蚀性气体和油;</p> <p>2、压力范围: 双作用2-8巴(Bar), 单作用2-8巴(Bar);</p> <p>3、工作温度: 标准型(使用丁腈橡胶O型圈)-20℃~+80℃; 低温型(使用低温丁腈橡胶O型圈)-35℃~+80℃; 高温型(使用氟橡胶O型圈)-15℃~+150℃;</p> <p>4、行程调整: 活塞在两端位置有±5°的可调范围;</p> <p>5、润滑: 在正常工作条件下, 不需添加润滑剂;</p> <p>6、安装: 适合室内或室外安装;</p> <p>7、最高使用压力: 输入气压不超过10巴。</p> | <p>1、Operating media: Compressed air, non-corrosive gases or oil;</p> <p>2、Air supply pressure: Double acting 2-8Bar, Single acting 2-8Bar;</p> <p>3、Working temperature: Standard temperature: -20℃~+80℃(NBR O-ring) Low temperature: -35℃~+80℃(Silicon rubber O-ring); High temperature: -15℃~+150℃(Viton O-ring);</p> <p>4、Travel adjustment: ±5° adjustment range;</p> <p>5、Lubrication: Under normal operating condition, need not add lubricant;</p> <p>6、Installation: Indoor or outdoor;</p> <p>7、Max pressure: 10bar.</p> |
|--|--|

耗气量计算 Gas Consumption Calculation

| 型号 Model | 开向体积(升) Open volum(L) | 关向体积(升) Close volum(L) | 型号 Model | 关向体积(升) Close volum(L) | 关向体积(升) Close volum(L) |
|----------|-----------------------|------------------------|----------|------------------------|------------------------|
| GT52 | 0.11 | 0.14 | GT190 | 5.9 | 7.9 |
| GT63 | 0.20 | 0.23 | GT210 | 7.4 | 9.7 |
| GT83 | 0.41 | 0.55 | GT240 | 10.7 | 14.3 |
| GT110 | 1.15 | 1.25 | GT270 | 16.9 | 22.5 |
| GT127 | 1.40 | 1.80 | GT300 | 23.8 | 29.7 |
| GT160 | 3.65 | 5.03 | GT350 | 35.1 | 46.3 |

耗气量取决于供气压力、开关行程, 体积及动作次数, 计算如下:

$$\text{升/分} = \text{气缸体积(开向体积+关向体积)} \times \left[\frac{\text{供气压力(Kpa)} + 101.3}{101.3} \right] \times \text{次数/分钟}$$

Gas consumption depend on air supply, stroke, volume and action times, calculation as below:

$$\text{L/min} = \text{cylinder volume}(\text{open volume} + \text{close volume}) \times \left[\frac{\text{air supply}}{101.3} \right] \times \text{times/min}$$

重量表 Weight

| 型号 Model | 52 | 63 | 83 | 110 | 127 | 160 |
|----------|-------|-------|-------|-------|--------|--------|
| GTD | 1.1kg | 1.7kg | 2.9kg | 6.8kg | 10.1kg | 15.3kg |
| GTE | 1.2kg | 2.0kg | 3.5kg | 8.7kg | 13.2kg | 19.7kg |

| 型号 Model | 190 | 210 | 240 | 270 | 300 | 350 |
|----------|------|------|------|------|-------|-------|
| GTD | 29kg | 36kg | 50kg | 71kg | 110kg | 186kg |
| GTE | 35kg | 44kg | 62kg | 89kg | 130kg | 234kg |

执行器选型 Actuator Selection

双作用执行器的选型 Double Acting Actuator Selection

在正常操作条件下, 双作用执行器考虑的安全系数为20%-30%。

示例:

- 矩=100N.m
- 安全力矩=100 × (1+30%)=130N.m
- 气源压力=5Bar

对照双作用力矩表, 选配双作用执行器最小规格为JD-GTD105

Under normal operation condition, double acting actuator consider safety factor 20%-30%.

For ample:

- Valve torque=100N.m
- Torque with safety factor=100×(1+30%)=130N.m
- Air supply=5Bar

Check the output torque of double acting, choose the smallest model JD-GTD105

单作用执行器的选型 Single Acting Actuator Selection

在正常条件下单作用执行器考虑的安全系数为30%-50%。

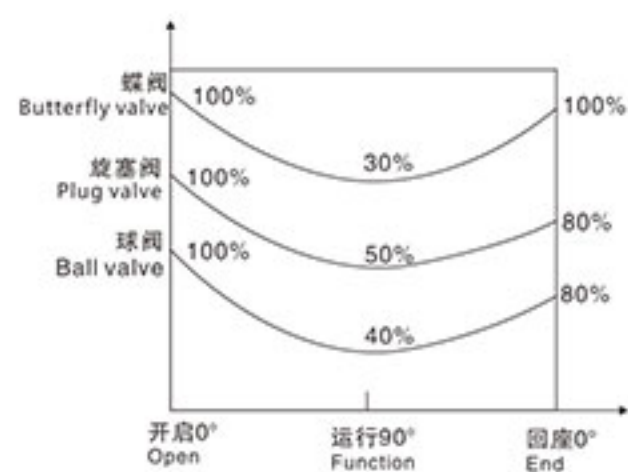
例如:

- 阀门需要力矩=80N.m
- 安全力矩=80(1+30%)=104N.m
- 气源压力=5Bar
- 对照单作用执行器输出力矩表, 我们可以查到JD-GTE140K7输出力矩为
- 空气行程0° =308N.m
- 空气行程90° =247N.m
- 弹簧行程90° =181N.m
- 弹簧行程0° =120N.m

所有输出力矩均大于我们需求。

Under normal operation condition, single acting actuator consider safety factor 30%-50%, for example:

- Valve torque=80N.m
- Torque with safety factor=80×(1+30%)=104N.m
- Air supply=5Bar
- Check the output torque of single acting, we will find the torque of model JD-GTE140K7
- Air stroke 0° =308N.m
- Air stroke 90° =247N.m
- Spring stroke 90° =181N.m
- Spring stroke 0° =120N.m
- All output torque is greater than our demand.



单作用执行器的经济选型 Single Acting Pneumatic Actuator Economic Selection

在单作用执行器的选配过程中, 如果能够了解阀门在开启、运行和关闭时的扭矩分配, 我们就可以更加经济、更加合理地选配执行器。

- 例如: 蝶阀最大扭矩=104N.m
- 打开后扭矩104×30%=32N.m
- 气源压力=5Bar
- 我们可以选择JD-ATE130Kg
- 空气行程0° =183N.m>104N.m
- 空气行程90° =127N.m>32N.m
- 弹簧行程90° =169N.m>32N.m
- 弹簧行程0° =113N.m>104N.m
- 以上数据显示可以满足该蝶阀的正常启闭。

Single Acting Pneumatic Actuator Economic Selection

When selecting single acting pneumatic actuator, if you know valve start torque, running torque and close torque, we can select more economic actuator.

- For example: Butterfly valve biggest torque=104N.m
- Running torque 104×30%=32N.m
- Air supply=5Bar
- We can select JD-ATE130Kg
- Air stroke 0° =183N.m>104N.m
- Air stroke 90° =127N.m>32N.m
- Spring stroke 90° =169N.m>32N.m
- Spring stroke 0° =113N.m>104N.m
- The above data show that the butterfly valve can meet the normal opening and closing.

订货须知 Ordering Instructions

| 内容 Content | 系列 Series | 作用形式 Action form | 规格 Specifications | 弹簧数量 Spring quantity | 行程角度 Travel angle | 产品代码 Product code |
|------------|-----------|--|-------------------------|--------------------------|-----------------------------|-------------------|
| JD | GT | D | 52 | K10 | 90° | JD-GTD52-K10 |
| | GT AT | D 双作用 Double action E 单作用 Single action | 52 63 75 | K8 K9 K10 | 90° 120° 135° 180° | |